



INTERNATIONAL REVOLVING DOOR

## Jupiter

The Grand Revolving Door

**Designed for Safety:** User safety is considered first and foremost in the design of the Jupiter revolving door. Speed controls and emergency collapsing mechanisms are among its many standard features that provide safe and trouble free operation.

Quality cannot be matched: International manufactures our revolving doors using superior materials and process. The metal finishing process creates the finest finishes available.

**Materials:** Available in stainless steel, aluminum and bronze. A variety of finishes offered based on material:

- #4 Brushed Stainless Steel or Bronze
- #8 Polished Mirrored Stainless Steel or Bronze
- Painted Aluminum
- Anodized Aluminum
- Statuary Bronze

**Mechanical Components:** Our Orbiter automatic speed control along with the mechanical components are of heavy design and construction, making them the longest lasting in the industry.

**Sensors:** **The Backstop Safety Sensor** was originally designed by International. These sensors do not allow the trailing door wing to get too close to a user, eliminating the potential for injury. Our **Wing Collapsing Sensor** stops the door if a wing collapses or moves from its normal position.



### FEATURE SUMMARY

- Spacious entrance solution
- Micro-processor controlled
- Wing mounted start-up sensors
- Backstop safety sensors
- Wing collapsing safety sensors
- Outside stile safety sensors
- Recorded messages assist users during safety events
- Easily adjustable door speed
- Simultaneous entry and exit
- Use of Infrared sensors for stable, reliable detection
- Automatic continuous monitoring of the health of critical sensors
- Incremental 360 degree digital encoder for accurate positioning
- No visible joints: available on stainless and bronze doors
- 3 or 4 wing design
- Several center drum designs available
- Handicap slow button
- Adjustable weather-stripping on wings reduces maintenance costs.
- BOCA and IBC compliant

### BENEFITS INCLUDE

**Significant cost saving** by minimizing A/C and heat losses: revolving doors are the most efficient method for controlling a building's stack pressure while reducing heating and cooling costs. Compared to swing doors, revolving doors reduce over 500% of unwanted air from infiltrating the inside of the building.

### OPTIONS

- Wall post safety sensors
- Ceiling lights
- Custom finish types such as wood
- Center drum:
  1. Round
  2. Scalloped
  3. 4- wing square, or 3- wing triangular
  4. Glass display case
- Night closure option in the event of storms or other related issues.
- Tinted glass
- Solid side walls
- Custom height wing and wall post sightlines available.

AESTHETICALLY BEAUTIFUL

HAND CRAFTED DURABILITY

ALWAYS OPEN - ALWAYS CLOSED - ALWAYS EFFICIENT

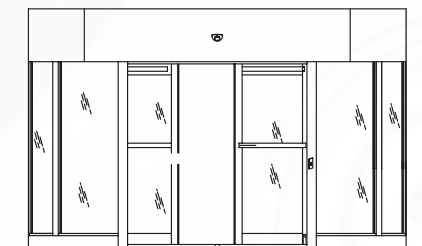
AMERICAN OWNED



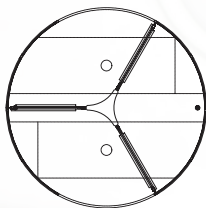
AMERICAN MADE



3-WING ALUMINUM JUPITER AUTOMATIC REVOLVING DOOR

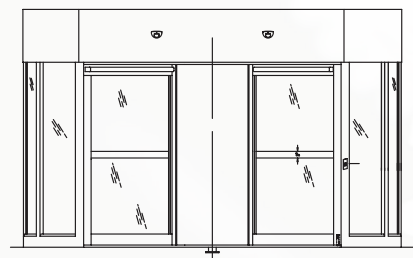


Interior

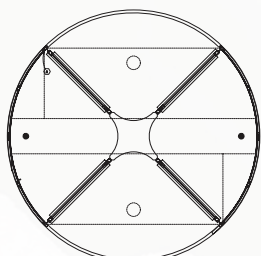


Exterior

4-WING STAINLESS STEEL JUPITER AUTOMATIC REVOLVING DOOR



Interior



Exterior

# Jupiter

## The Grand Revolving Door

Turn Your Entrance System Into a World-Class Landmark

### SAFETY AND SPACIOUS ELEGANCE

The Jupiter has been designed by International's engineers using today's most advanced technology. Designed for safety with spacious elegance in mind, these doors utilize state-of-the-art sensor and drive technology to provide the world's safest entrance systems.

### BENEFITS OF A REVOLVING DOOR

Why a revolving door? The American Society of Heating, Refrigeration and Air-Conditioning Engineers (ASHRAE) set the specifications for air filtration and energy conservation in new building design. These two standards – "90A" and "90.1" – with testing in accordance with ANSI/ASTM E-283 are required by the model building codes. These tests show that large quantities of air rush in every time a sliding or swing door opens, but not so with an International Revolving Door.

Additionally, all revolving doors are required by the "BOCA" National Building Code and the National Fire Protection Agencies' "Life Safety Code" to be equipped with a speed control to limit the door speed and also an emergency collapsing mechanism to allow for emergency egress. All International's revolving door meet or exceed all known federal building code requirements.

### GET THE DOOR YOU REALLY WANT

International can design and produce virtually any type and size of revolving door required. Let your imagination design your entrance solution and we can engineer and produce your requirements.

### JUPITER 3-WING DOOR MODELS

INSIDE DIAMETER	ALUMINUM		STAINLESS / BRONZE	
	Throat Opening	Jamb to Jamb Opening	Throat Opening	Jamb to Jamb Opening
11'-6"	5'-6 1/2"	11'-10"	5'-6 1/2"	11'-10 1/4"
12'-0"	5'-9 1/2"	12'-4"	5'-9 1/2"	12'-4 1/4"
14'-0"	6'-9 1/2"	14'-4"	6'-9 1/2"	14'-4 1/4"
16'-0"	7'-9 1/2"	16'-4"	7'-9 1/2"	16'-4 1/4"

### JUPITER 4-WING DOOR MODELS

INSIDE DIAMETER	ALUMINUM		STAINLESS / BRONZE	
	Throat Opening	Jamb to Jamb Opening	Throat Opening	Jamb to Jamb Opening
11'-6"	7'-11 11/16"	11'-10"	7'-11 11/16"	11'-10 1/4"
12'-0"	8'-3 15/16"	12'-4"	8'-3 15/16"	12'-4 1/4"
14'-0"	9'-8 15/16"	14'-4"	9'-8 15/16"	14'-4 1/4"
16'-0"	11'-1 7/8"	16'-4"	11'-1 7/8"	16'-4 1/4"

Charts show typical configurations. International can build your door to your individual specification requirement. In addition, finishes can include Stainless Steel Brushed, Stainless Steel Mirror, Bronze Clad, Bronze Cast, Anodized, Wood and Painted finishes.



INTERNATIONAL REVOLVING DOOR

2138 N. Sixth Ave., Evansville, IN 47710-2895 • Tel: (812) 425-3311 • Fax: (812) 426-2682  
 Email: [info@internationalrevolvingdoors.com](mailto:info@internationalrevolvingdoors.com) • [www.internationalrevolvingdoors.com](http://www.internationalrevolvingdoors.com)